


APPENDIX B:
SOIL BORINGS


Map Source: "Brentwood Park, Madison, WI," Google Earth, October 2018 Aerial, Accessed December 16, 2019.



 ² = Boring 2 (typical)



NOT-TO-SCALE

 **Soils & Engineering Services, Inc.**
 1102 STEWART STREET • MADISON, WISCONSIN 53713
 Phone: 608-274-7600 • 888-866-SOIL (7645)
 Fax: 608-274-7511 • Email: soils@soils.ws
 CONSULTING CIVIL ENGINEERS SINCE 1966

LOCATION SKETCH
 Brentwood Park
 1402 Mac Pherson Street
 City of Madison, Dane County, Wisconsin

DRAWING
 13300.18-1

NOTES

1. The boundary lines between different soil strata, as shown on the Boring Log Record, are approximate and may be gradual.
2. The boring field log contains a description of the soil conditions between samples based on the equipment performance and the soil cuttings. The Boring Log Record contains the description of the soil conditions as interpreted by a geotechnical engineer and/or a geologist after review of the boring field logs and soil samples and/or laboratory test results.
3. We define "Caved Level" as the depth below the existing ground surface at a boring location where the soils have collapsed into the borehole following removal of the drilling tools.
4. We define "Water Level" as the depth below the existing ground surface at a boring location to the level of water in the open borehole at the time indicated unless otherwise defined on the Boring Log Record.
5. We define "at completion" for a boring as being the time when our drilling crew has completed the removal of all drilling tools from the borehole.
6. The Notes and Legend Record and the Boring Log Record should not be separated.

RELATIVE PERCENTAGE TERMS

no	0%
trace	<5%
few	5 to <10%
little	10 to <30%
some	30 to < 50%

TEST RESULTS LEGEND

q_p = Penetrometer reading, $\frac{\text{ton}}{\text{ft}^2}$

RELATIVE MOISTURE TERMS AT TIME OF SAMPLING

Frozen or F = Frozen material
 Dry = Dusty, dry to touch, absence of moisture
 Moist or M = Damp to touch, no visible water
 Wet or W = Visible free water


DRILLING METHODS LEGEND


HSA = Continuous flight hollow-stem augers

N-VALUE LEGEND

WH = Weight of hammer and sampling rods.

SAMPLER TYPE LEGEND

 Grab sample

 2-inch-outside-diameter, split-barrel sampler

 **Soils & Engineering Services, Inc.**
 1102 STEWART STREET • MADISON, WISCONSIN 53713
 Phone: 608-274-7600 • 888-866-SOIL (7645)
 Fax: 608-274-7511 • Email: soils@soils.ws
 CONSULTING CIVIL ENGINEERS SINCE 1966

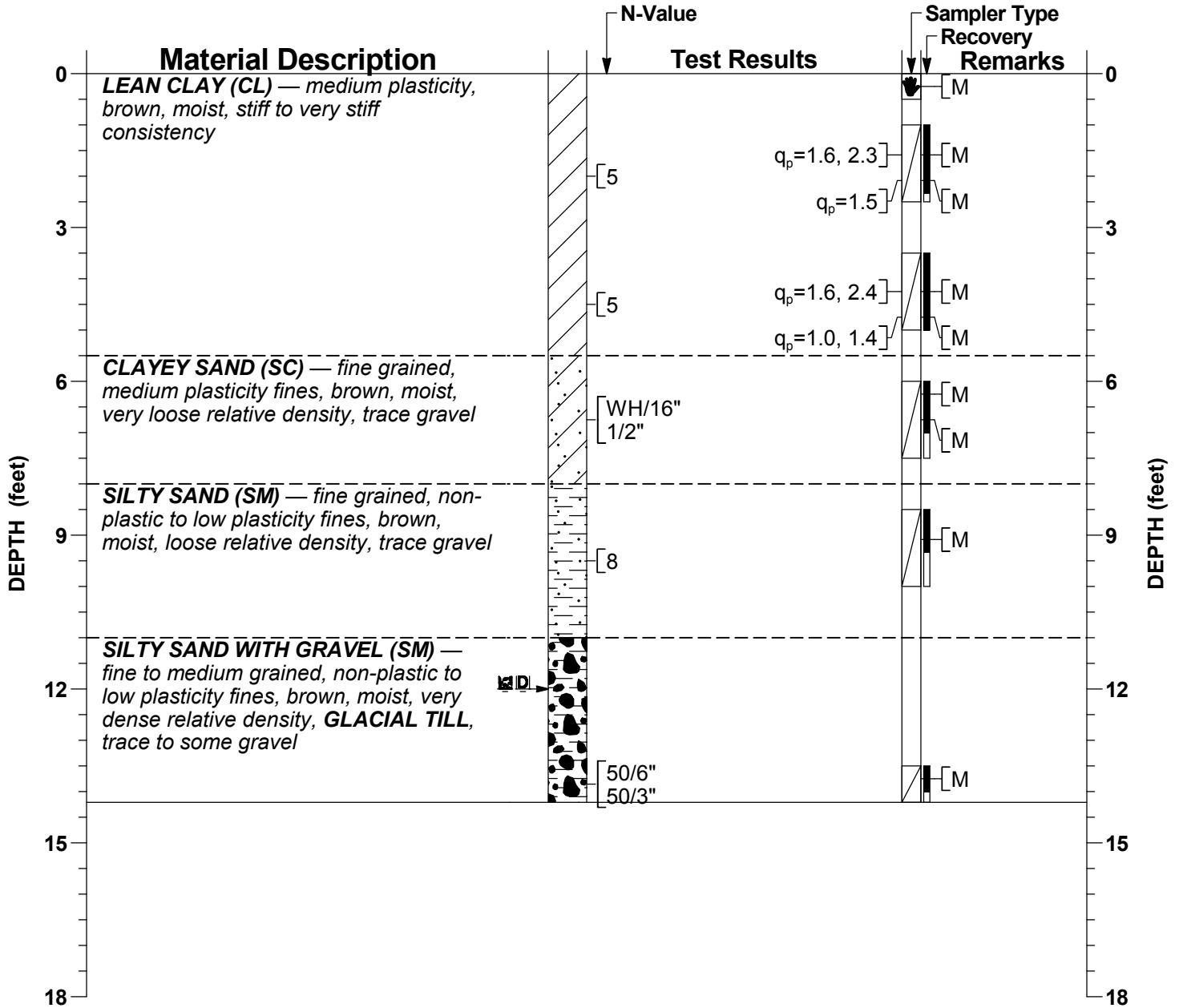
NOTES AND LEGEND RECORD
 Brentwood Park
 1402 Mac Pherson Street
 City of Madison, Dane County, Wisconsin

13300.18

General Location:

Boring 1

LATITUDE: —	LONGITUDE: —	COUNTY: Dane	SECTION: 36	CREW CHIEF: SWK	DRILL RIG: Geoprobe 7822DT	PAGE: 1 of 1
NORTHING: —	EASTING: —	TOWNSHIP: (Westport) 8 N	¼: SE	LOG REVIEW: CMB	HAMMER TYPE: Automatic (80%)	TOTAL DEPTH: 14'-2 1/2"
STATION: —	OFFSET: —	RANGE: 9 E	¼ ¼: SE	LOG QC: CMB	DATE STARTED: 12/10/2019	DATE COMPLETED: 12/10/2019



WATER LEVEL LEGEND	OTHER LEVEL LEGEND
□ 12'-0" Dry at completion	■ 12'-0" Caved at completion

DRILL METHOD	TOOL SIZE	CASING SIZE	DRILL FLUID	DEPTH FROM	DEPTH TO	HOLE DIA
HSA	2 1/4"	—	None	0'-0"	14'-2 1/2"	6.3"

SAMPLING METHOD(S): ASTM D1586

SURFACE PATCH: —

BACKFILL: Auger Cuttings, Bentonite Chips, Caved Soil

The Notes and Legend Record is considered a part of this Boring Log Record.


Soils & Engineering Services, Inc.
 1102 STEWART STREET • MADISON, WISCONSIN 53713
 Phone: 608-274-7600 • 888-866-SOIL (7645)
 Fax: 608-274-7511 • Email: soils@soils.ws
 CONSULTING CIVIL ENGINEERS SINCE 1966

BORING LOG RECORD
 Brentwood Park
 1402 Mac Pherson Street
 City of Madison, Dane County, Wisconsin


13300.18

Map Source: "Whitetail Ridge Park, Madison, WI," Google Earth, October 2018 Aerial, Accessed December 17, 2019.



 **2** = Boring 2 (typical)

N
↑
+
↓
NOT-TO-SCALE

 **Soils & Engineering Services, Inc.**
 1102 STEWART STREET • MADISON, WISCONSIN 53713
 Phone: 608-274-7600 • 888-866-SOIL (7645)
 Fax: 608-274-7511 • Email: soils@soils.ws
 CONSULTING CIVIL ENGINEERS SINCE 1966

LOCATION SKETCH
Whitetail Ridge Park
1818 Anhalt Drive
City of Madison, Dane County, Wisconsin

DRAWING
13300.28-1

NOTES

1. The boundary lines between different soil strata, as shown on the Boring Log Records, are approximate and may be gradual.
2. The boring field log contains a description of the soil conditions between samples based on the equipment performance and the soil cuttings. The Boring Log Records contains the description of the soil conditions as interpreted by a geotechnical engineer and/or a geologist after review of the boring field logs and soil samples and/or laboratory test results.
3. We define "Caved Level" as the depth below the existing ground surface at a boring location where the soils have collapsed into the borehole following removal of the drilling tools.
4. We define "Water Level" as the depth below the existing ground surface at a boring location to the level of water in the open borehole at the time indicated unless otherwise defined on the Boring Log Records.
5. We define "at completion" for a boring as being the time when our drilling crew has completed the removal of all drilling tools from the borehole.
6. The Notes and Legend Record and the Boring Log Records should not be separated.

RELATIVE PERCENTAGE TERMS

no	0%
trace	<5%
few	5 to <10%
little	10 to <30%
some	30 to < 50%

TEST RESULTS LEGEND

q_p = Penetrometer reading, ^{ton}/_{ft²}


RELATIVE MOISTURE TERMS AT TIME OF SAMPLING


Frozen or F = Frozen material
 Dry = Dusty, dry to touch, absence of moisture
 Moist or M = Damp to touch, no visible water
 Wet or W = Visible free water

DRILLING METHODS LEGEND

HSA = Continuous flight hollow-stem augers

SAMPLER TYPE LEGEND

 Grab sample

 2-inch-outside-diameter, split-barrel sampler



Soils & Engineering Services, Inc.
 1102 STEWART STREET • MADISON, WISCONSIN 53713
 Phone: 608-274-7600 • 888-866-SOIL (7645)
 Fax: 608-274-7511 • Email: soils@soils.ws
 CONSULTING CIVIL ENGINEERS SINCE 1966

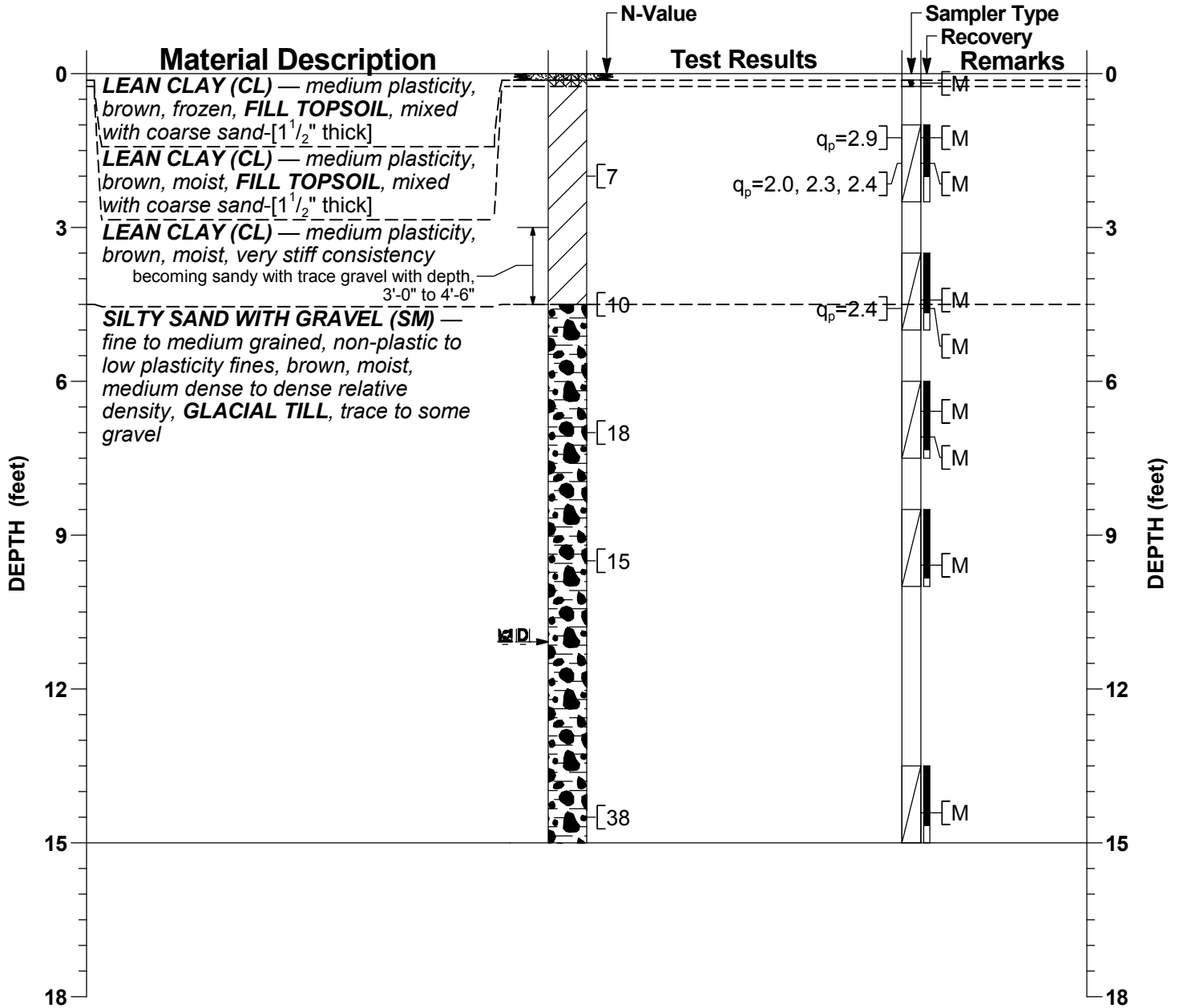
NOTES AND LEGEND RECORD
 Whitetail Ridge Park
 1818 Anhalt Drive
 City of Madison, Dane County, Wisconsin

13300.28

General Location:

Boring 1

LATITUDE: —	LONGITUDE: —	COUNTY: Dane	SECTION: 19	CREW CHIEF: SWK	DRILL RIG: Geoprobe 7822DT	PAGE: 1 of 1
NORTHING: —	EASTING: —	TOWNSHIP: (Burke) 8 N	¼: SW	LOG REVIEW: CMB	HAMMER TYPE: Automatic (80%)	TOTAL DEPTH: 15'-0"
STATION: —	OFFSET: —	RANGE: 10 E	¼ ¼: NW	LOG QC: CMB	DATE STARTED: 12/11/2019	DATE COMPLETED: 12/11/2019



WATER LEVEL LEGEND	OTHER LEVEL LEGEND
11'-1" Dry at completion	0'-0" to 0'-1 1/2" Frozen
	11'-1" Caved at completion

DRILL METHOD	TOOL SIZE	CASING SIZE	DRILL FLUID	DEPTH FROM	DEPTH TO	HOLE DIA
HSA	2 1/4"	—	None	0'-0"	15'-0"	6.3"

SAMPLING METHOD(S): ASTM D1586

SURFACE PATCH: —

BACKFILL: Auger Cuttings, Bentonite Chips, Caved Soil

The Notes and Legend Record is considered a part of this Boring Log Record.

Soils & Engineering Services, Inc.
 1102 STEWART STREET • MADISON, WISCONSIN 53713
 Phone: 608-274-7600 • 888-866-SOIL (7645)
 Fax: 608-274-7511 • Email: soils@soils.ws
 CONSULTING CIVIL ENGINEERS SINCE 1966

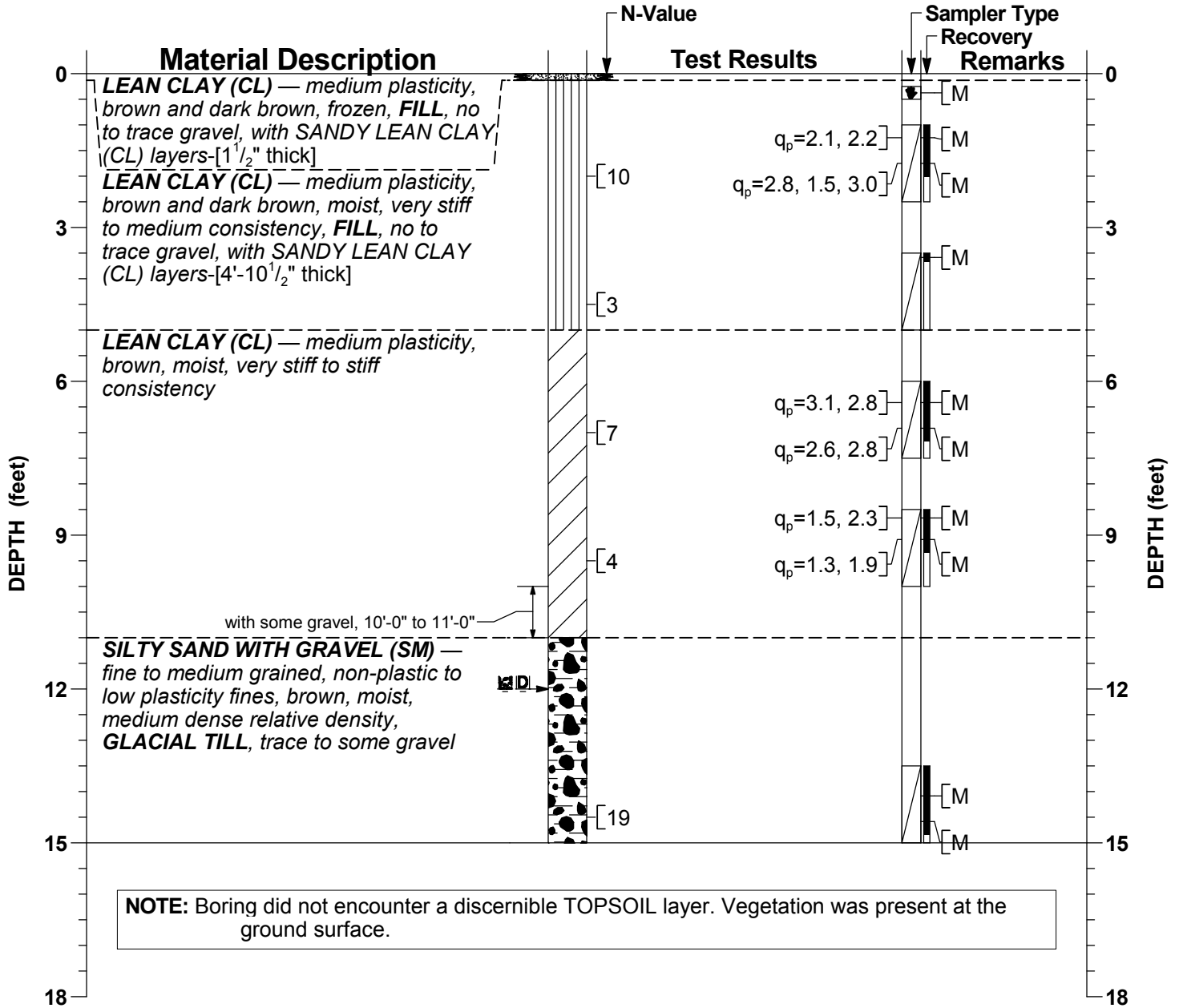
BORING LOG RECORD
 Whitetail Ridge Park
 1818 Anhalt Drive
 City of Madison, Dane County, Wisconsin

13300.28

General Location:

Boring 2

LATITUDE: —	LONGITUDE: —	COUNTY: Dane	SECTION: 19	CREW CHIEF: SWK	DRILL RIG: Geoprobe 7822DT	PAGE: 1 of 1
NORTHING: —	EASTING: —	TOWNSHIP: (Burke) 8 N	¼: SW	LOG REVIEW: CMB	HAMMER TYPE: Automatic (80%)	TOTAL DEPTH: 15'-0"
STATION: —	OFFSET: —	RANGE: 10 E	¼ ¼: NW	LOG QC: CMB	DATE STARTED: 12/11/2019	DATE COMPLETED: 12/11/2019



WATER LEVEL LEGEND	OTHER LEVEL LEGEND
12'-0" Dry at completion	0'-0" to 0'-1 1/2" Frozen
	12'-0" Caved at completion

DRILL METHOD	TOOL SIZE	CASING SIZE	DRILL FLUID	DEPTH FROM	DEPTH TO	HOLE DIA
HSA	2 1/4"	—	None	0'-0"	15'-0"	6.3"

SAMPLING METHOD(S): ASTM D1586

SURFACE PATCH: —

BACKFILL: Auger Cuttings, Bentonite Chips, Caved Soil

The Notes and Legend Record is considered a part of this Boring Log Record.

Soils & Engineering Services, Inc.
 1102 STEWART STREET • MADISON, WISCONSIN 53713
 Phone: 608-274-7600 • 888-866-SOIL (7645)
 Fax: 608-274-7511 • Email: soils@soils.ws
 CONSULTING CIVIL ENGINEERS SINCE 1966


BORING LOG RECORD
 Whitetail Ridge Park
 1818 Anhalt Drive
 City of Madison, Dane County, Wisconsin

13300.28

Map Source: "Windom Way Park, Madison, WI." Google Earth. October 2018 Aerial. Accessed December 17, 2019.



Windom Way

 **= Boring 2 (typical)**



NOT-TO-SCALE



Soils & Engineering Services, Inc.

1102 STEWART STREET • MADISON, WISCONSIN 53713
Phone: 608-274-7600 • 888-866-SOIL (7645)
Fax: 608-274-7511 • Email: soils@soils.ws

CONSULTING CIVIL ENGINEERS SINCE 1966

LOCATION SKETCH

Windom Way Park
1920 Windom Way
City of Madison, Dane County, Wisconsin

DRAWING
13300.29-1

NOTES

1. The boundary lines between different soil strata, as shown on the Boring Log Record, are approximate and may be gradual.
2. The boring field log contains a description of the soil conditions between samples based on the equipment performance and the soil cuttings. The Boring Log Record contains the description of the soil conditions as interpreted by a geotechnical engineer and/or a geologist after review of the boring field logs and soil samples and/or laboratory test results.
3. We define "Caved Level" as the depth below the existing ground surface at a boring location where the soils have collapsed into the borehole following removal of the drilling tools.
4. We define "Water Level" as the depth below the existing ground surface at a boring location to the level of water in the open borehole at the time indicated unless otherwise defined on the Boring Log Record.
5. We define "at completion" for a boring as being the time when our drilling crew has completed the removal of all drilling tools from the borehole.
6. The Notes and Legend Record and the Boring Log Record should not be separated.

RELATIVE PERCENTAGE TERMS

no	0%
trace	<5%
few	5 to <10%
little	10 to <30%
some	30 to < 50%

TEST RESULTS LEGEND

q_p = Penetrometer reading, ^{ton}/_{ft²}


RELATIVE MOISTURE TERMS AT TIME OF SAMPLING


Frozen or F = Frozen material
 Dry = Dusty, dry to touch, absence of moisture
 Moist or M = Damp to touch, no visible water
 Wet or W = Visible free water

DRILLING METHODS LEGEND

HSA = Continuous flight hollow-stem augers

SAMPLER TYPE LEGEND

 Grab sample

 2-inch-outside-diameter, split-barrel sampler

 **Soils & Engineering Services, Inc.**
 1102 STEWART STREET • MADISON, WISCONSIN 53713
 Phone: 608-274-7600 • 888-866-SOIL (7645)
 Fax: 608-274-7511 • Email: soils@soils.ws
 CONSULTING CIVIL ENGINEERS SINCE 1966

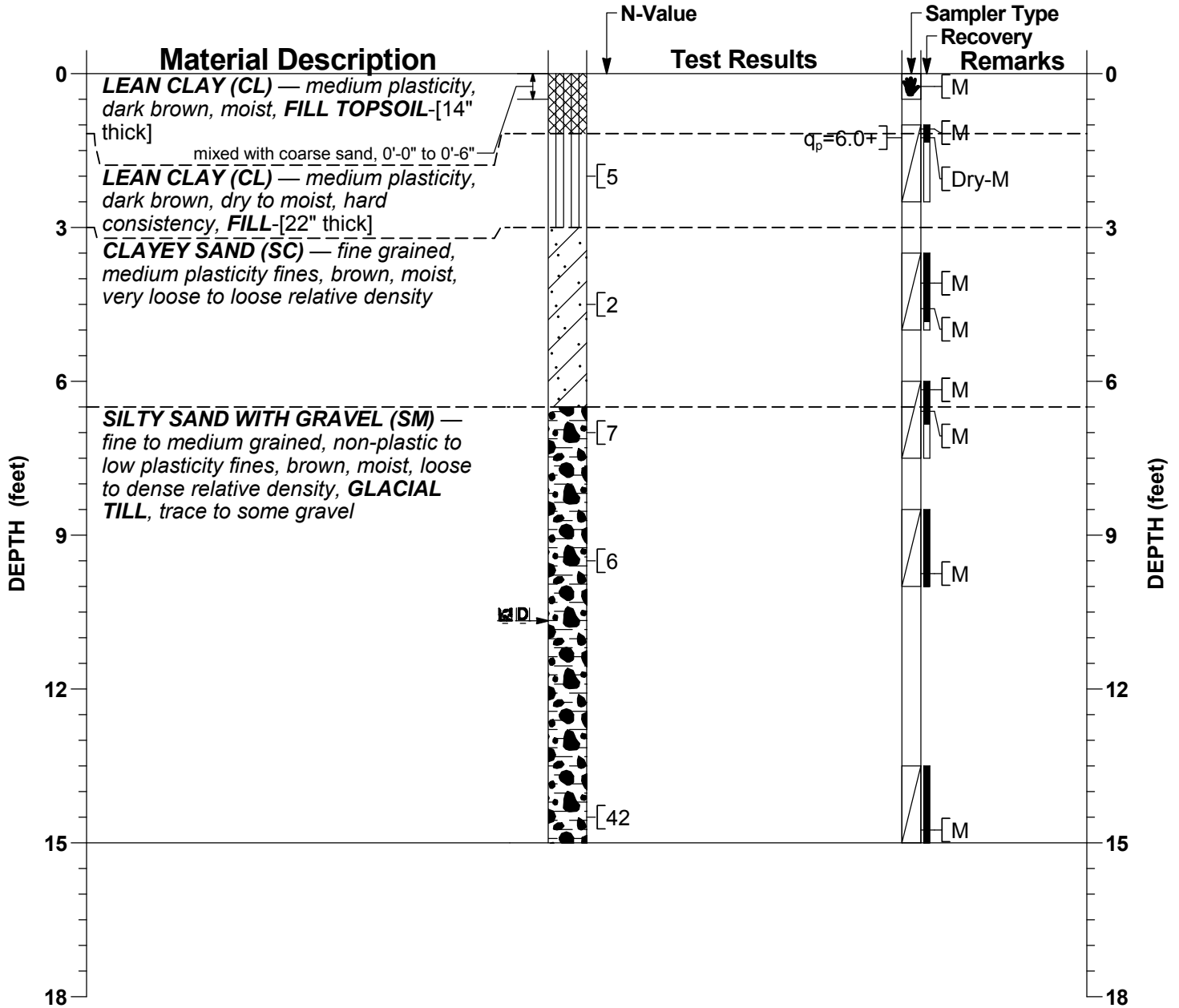
NOTES AND LEGEND RECORD
 Windom Way Park
 1920 Windom Way
 City of Madison, Dane County, Wisconsin

13300.29

General Location:

Boring 1

LATITUDE: —	LONGITUDE: —	COUNTY: Dane	SECTION: 30	CREW CHIEF: SWK	DRILL RIG: Geoprobe 7822DT	PAGE: 1 of 1
NORTHING: —	EASTING: —	TOWNSHIP: (Burke) 8 N	¼: SW	LOG REVIEW: CMB	HAMMER TYPE: Automatic (80%)	TOTAL DEPTH: 15'-0"
STATION: —	OFFSET: —	RANGE: 10 E	¼ ¼: NE	LOG QC: CMB	DATE STARTED: 12/11/2019	DATE COMPLETED: 12/11/2019



WATER LEVEL LEGEND	OTHER LEVEL LEGEND
10'-8" Dry at completion	10'-8" Caved at completion

DRILL METHOD	TOOL SIZE	CASING SIZE	DRILL FLUID	DEPTH FROM	DEPTH TO	HOLE DIA
HSA	2 1/4"	—	None	0'-0"	15'-0"	6.3"
SAMPLING METHOD(S): ASTM D1586						
SURFACE PATCH: —						
BACKFILL: Auger Cuttings, Bentonite Chips, Caved Soil						

The Notes and Legend Record is considered a part of this Boring Log Record.

Soils & Engineering Services, Inc.
 1102 STEWART STREET • MADISON, WISCONSIN 53713
 Phone: 608-274-7600 • 888-866-SOIL (7645)
 Fax: 608-274-7511 • Email: soils@soils.ws
 CONSULTING CIVIL ENGINEERS SINCE 1966

BORING LOG RECORD
 Windom Way Park
 1920 Windom Way
 City of Madison, Dane County, Wisconsin

13300.29